

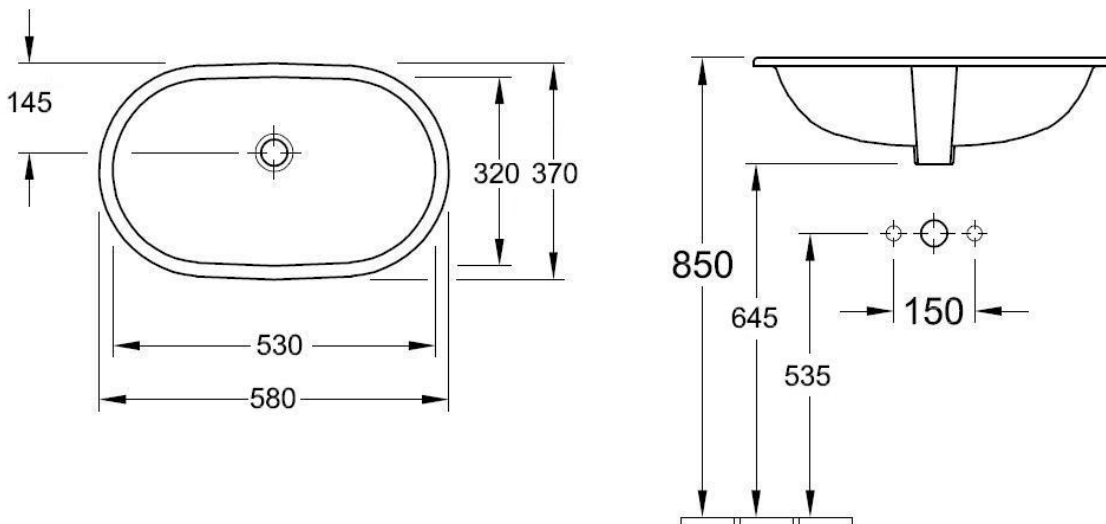


**Villeroy & Boch**  
1748

## O.novo 580x370mm Under-Counter Basin



### TECHNICAL SPECIFICATIONS



PRODUCT NO: **41625001**, O.novo Under-Counter Basin **OD** 580x370mm (**ID** 530x320mm)

Recommended overflow waste - code 94238

Overflow hole should be positioned to the front of the cabinet

*Note: Benchtop cut-out should not be performed for Under Counter basins without having the actual basin/s on hand due to manufacturing variances that can occur - Basin should only be mounted with flexible adhesive – For detailed installation instructions refer [www.argentaust.com.au](http://www.argentaust.com.au)*