

chios SBC-205

ceramic semi-recessed basin

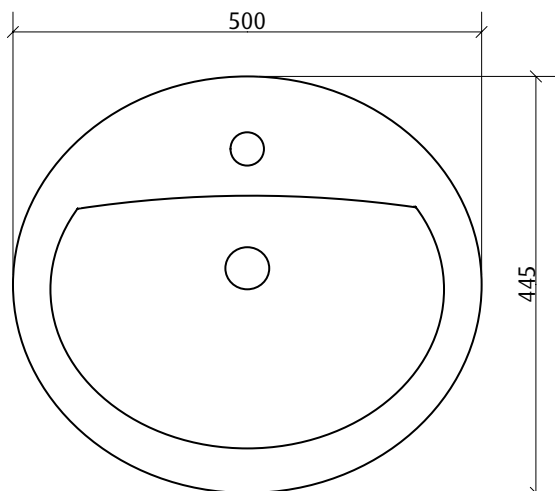
500 x 445 x 180 mm



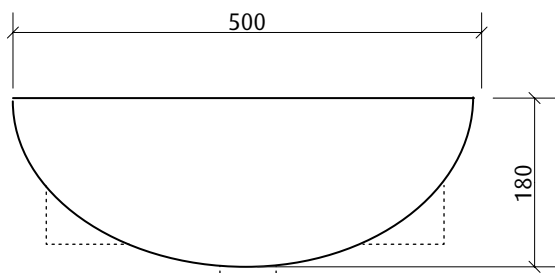
Fit a full-size basin into a compact space

product code	<ul style="list-style-type: none"> ■ SBC-205 1 taphole ■ SBC-205-3T 3 tapholes
waste outlet	Suits standard 32 mm waste with overflow (not supplied)
trap	Suits wall exit or floor exit trap, subject to local licensing authorities [SVA-001 – Chrome bottle trap with wall exit] [SVA-001-FEP – Chrome floor exit pipe]
bowl capacity	7 litres
overflow	Standard with overflow
fixing	Use acetic cured silicone sealant. Do not use epoxy type adhesives. Always use the actual basin to verify cut-out.
cleaning	Clean with a damp cloth. Do not use abrasive cleaners, liquids or pastes.
dimensions	All dimensions are nominal and subject to normal ceramic manufacturing variations of ± 5 mm. Specifications may vary without notice as part of our continuous improvement practices.

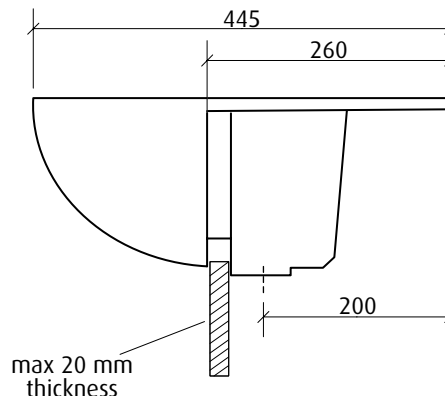
top view



front cross-section view



side cross-section view



Important!

- Use acetic cured silicone sealant. **Do not use epoxy type adhesives.**
- Always use the actual basin to verify cut-out.